



## Contacts:

**HOME Artist Development**  
[artistdevelopment@homemcr.org](mailto:artistdevelopment@homemcr.org)

Olly Bloor  
**Arches Technician**  
[olly.bloor@homemcr.org](mailto:olly.bloor@homemcr.org)

Pete Ellis  
**HOME Head of Technical**  
[pete.ellis@homemcr.org](mailto:pete.ellis@homemcr.org)

## Contents

2	Arch 1 (A1)
2	Space Specifications
3	Lighting
5	Sound
6	Video
7	Arch 2 (A2)
8	Arch 3 (A3)
9	All Arches
9	Available Equipment
10	Space use policies

**PLEASE NOTE:** The Arches are a newly opened project and as such we are still in a period of testing. There may be some discrepancies between this document and the actual spaces. Please do not hesitate to get in contact with any questions or to arrange a site visit.

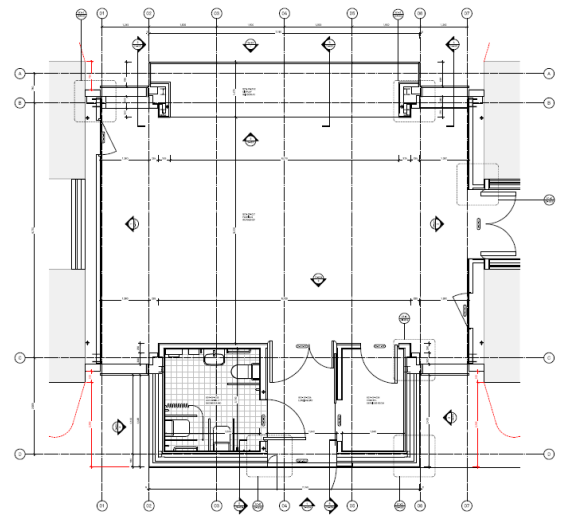
## ADVANCE INFORMATION FROM INCOMING COMPANIES

HOME requires the following information from any visiting company (where applicable):

- Details of the materials for any set, artworks, or other constructions being brought.
- Method statements for construction/making activities.
- Risk assessments for any specific making/rehearsal processes or visual/physical effects.
- Resource requests including access to lighting and sound systems, projectors, tables, space requirements, tools, materials, and staffing requests (the Arches Technician is available to facilitate access to the full technical capabilities of A1).

## ARCH 1

Arch 1 is a custom-built rehearsal and development space for artists to explore their practice and test new ideas. It is a flexible space with black-out capability, a modern LED lighting rig, a professional sound system, projection, sprung dance floor, shower, and toilet. Capacity: up to 60 people, depending on the activity.



## SPACE SPECIFICATION & ACCESS

Room dimensions: 9.75m x 5.97m

Fixed truss height: 4.8m

The floor surface is a black dance floor on top of a sprung floor. Care must be taken not to scratch, mark, or damage the surface. Screwing into the floor is not permitted. Stage weights are available.

Wall mirror which can be covered when not required.

Power Distribution: A mixture of 13A and 16A circuits at high and low level in the space. Socapex, 6 Way 16Amp spiders available for three higher panels at grid height.  
Get-in level access from main HOME building/dock. A1 load-in door:

Black-out capability.

Access to Arch 1 is via loading doors 1.5m wide x 2.1m high – this entrance has flat, level access from HOME building.

Goods may also be moved into the space via Arch 3 having its own dock door measuring 3m wide x 2.25m high.

## LIGHTING

**Control:**

- 1 x ETC Ion XE 20
- 1 x Touchscreen monitor
- 1 x ETC net3 gateway

**Connectivity:**

- Data access and DMX points distributed around the space.

**Lighting Power:**

- 24 x DMX controlled 16a relay switches

**Moving Lights and LED Fixtures:**

No.	Fixture
6	ETC Colour source LED Fresnel V
6	ETC Coloursource LED Spot V (36°/50° lenses available)
6	Martin ELP LED Par
3	High End Systems LED Lonestar
3	High End Systems LED Solapix 7

**CABLE:**

- Socapexc, DMX and 16a TRS available to use as necessary.

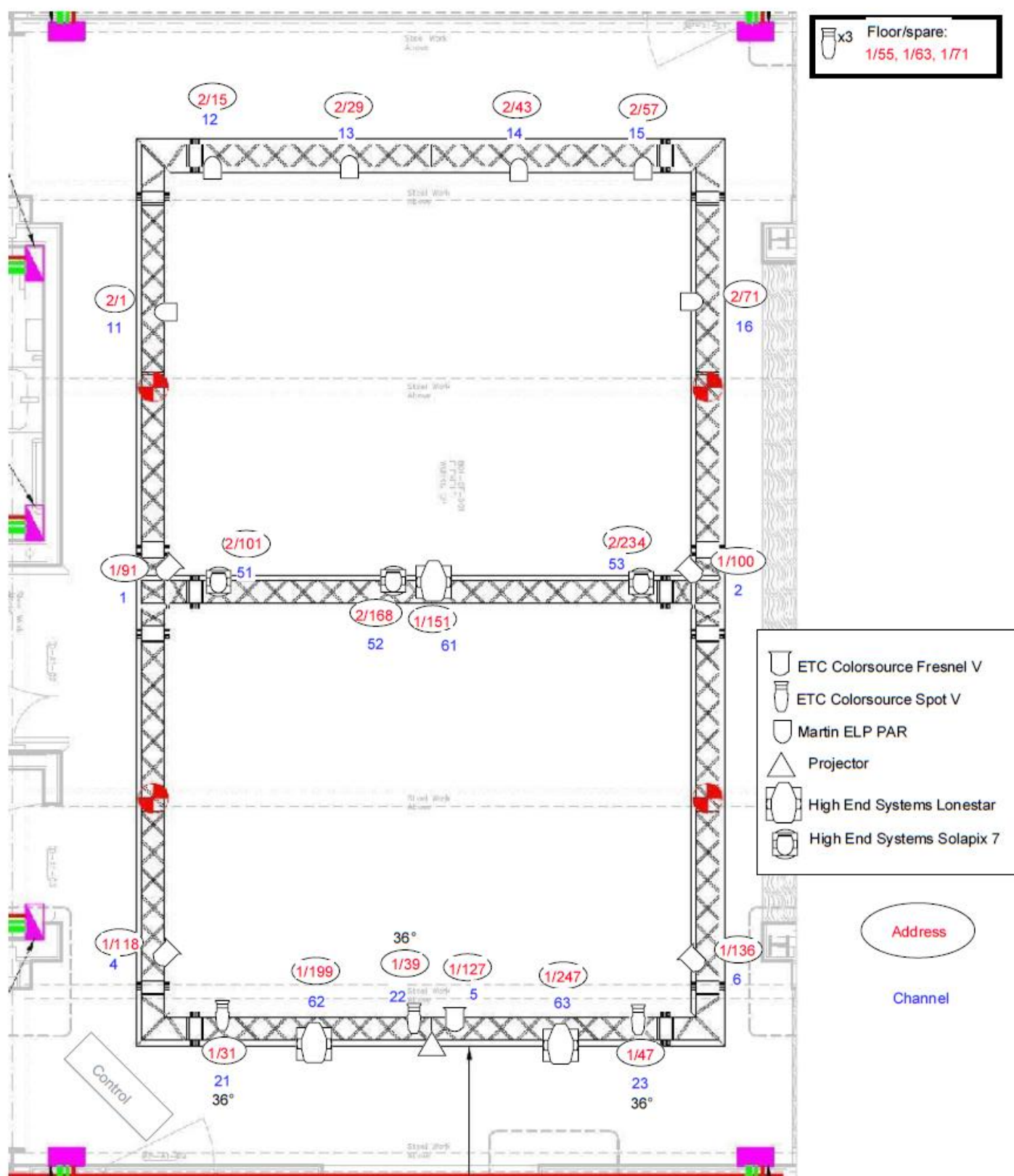
**LX Rig:**

Please note, variations from the standard house rig on page 4 must be pre-arranged.

**Electrical Equipment**

In accordance with the Electricity at Work Regulation, all mains powered equipment brought into HOME must be electrically safe. Evidence of relevant safety tests may be asked for and a member of HOME staff may refuse the use of any equipment if they consider it to be unsafe.

# ARCHES Technical Specifications



## **SOUND**

4x EM Acoustics EMS-101X Compact 2-way passive loudspeaker  
2x EM Acoustics S-15 Compact reflex subwoofer  
4x EM Acoustics M10 Passive stage monitor  
4x EM Acoustics EMS-51X ultra compact 2-way passive loudspeaker

### **Amplification:**

- DQ6D Advanced System Amplifier – Dante Enabled

### **Mixing Console:**

- 1 x Midas M32R Mixing Console
- 1 x Misas DL16 Stage Box

### **Microphones & Radio Mics:**

- 4x BETA 58A Shure Microphone
- 4x BETA 57A Shure Microphone
- 4x EMO E520 DI Box
- 2x 2-Channel Dante receiver (EW-DX EM 2 DANTE)
- 4x EW-DX SK (S1-10) Bodypack transmitter
- 4x EW-DX SKM (S1-10) Handheld transmitter

### **Playback:**

- 1 x Qlab 5 Audio/Video playback system (Mac Studio)
- Alternative playback available from 3.5mm jack input

## **VIDEO & FILMING**

**Projection:**

- 1 x rigged projector: Panasonic PT-RQ7 with standard lens. This projector remains in its fixed rig position in Arch 1 unless by specific arrangement.

**Projector Lenses:**

- 1 x ET-DLE020 – Ultra short throw lens
- 1 x ET-DLE060 – Short throw lens
- 1 x ET-DLE085 – Short throw lens
- 1 x ET-DLE105 – Lens
- 1 x ET-DLE150 – Lens

**Connectivity:**

- Data access points distributed throughout the space as well as SDI BNC connections.

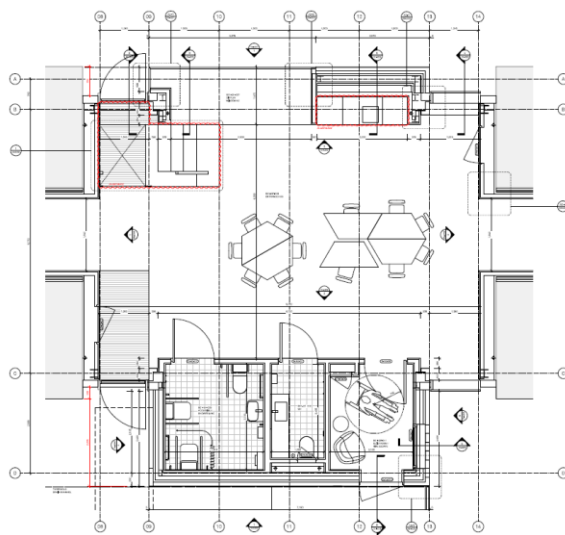
**Screen:**

- Motorised Projection Screen 350cm (W) x 220 (H) 16:10 ratio.

## **ARCH 2**

Arch 2 is the access point to the Arches from the main HOME building via external pathway. It is also a co-working, meeting, and networking space for artists and includes a meeting/quiet room, IT facilities and a refreshment station. At times, this can be a busy space with people moving through on their way to Arches 1 and 3.

Arch 2 also has direct access to Whitworth Street via stairs or platform lift for step-free access. Use of this entrance is by prior arrangement only.



## SPACE SPECIFICATIONS

Room dimensions: 9.69m x 5.97m

A2 features a modular table which can be arranged to suit solo work, 1-to-1 discussions, and large-scale meetings as required.

2x PC workstations (Windows PC, monitor, Blu-ray player/recorder, webcam, Office 365, and Adobe Creative Suite). **More details available in Appendix B.**

13A power is available from sockets around the space, including floor panels in the centre of the room.

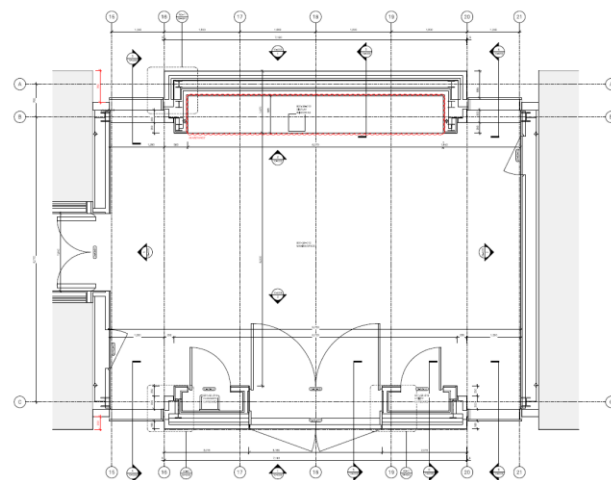
Inkjet printer/photocopier.

Tea-making facilities are available and reusable mugs are provided. For additional kitchen and food prep facilities, please enquire about the greenroom in the main HOME building.

## ARCH 3

# ARCHES Technical Specifications

Arch 3 is a double height studio space with a sink and worktop, and double width loading doors with access to the HOME loading dock. Arch 3 provides the space and flexibility for artists to collaborate across disciplines. Capacity: up to 30 artists.



## SPACE SPECIFICATIONS

Room dimensions: 9.75m x 5.97m.

Loading doors (W: 3.1m, H: 2.6m). **Loading door and dock access information can be found in Appendix C.**

13A power is available from wall sockets distributed around the room.

One 32A outlet.

Fabric is available to cover the lower windows to reduce light levels (i.e., to make projections more visible), and/or to screen the space from street view. These fabrics must be installed by the Arches technician, please arrange in advance. **THIS IS NOT A FULL BLACKOUT SOLUTION.**

Drain in centre of floor.

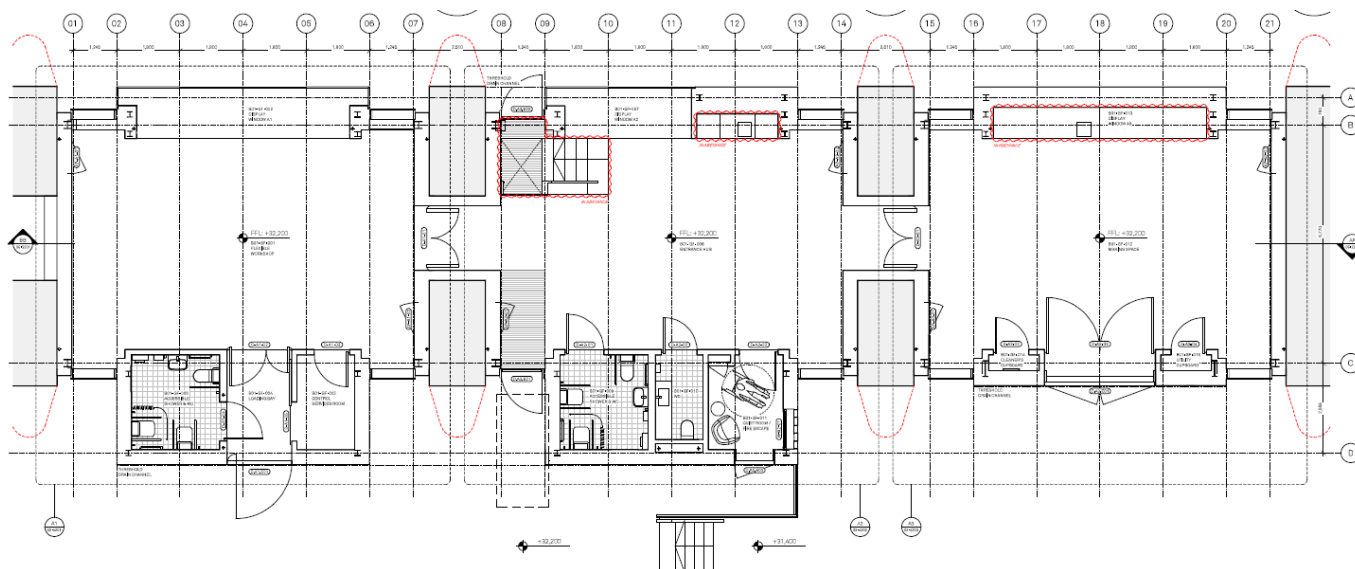
Sink and work bench.

White panels on wall opposite entrance, which can be projected onto, pinned into, or taped to.

## ALL ARCHES

# ARCHES Technical Specifications

The arches are committed to providing multi-use spaces to suit the work of those using them. Please enquire if there is any additional equipment or information you may need.



## AVAILABLE EQUIPMENT

In addition to the arch-specific equipment set out above, the following equipment is available across all three arches:

- 3x JBL PartyBox Bluetooth Speakers, usually distributed evenly between the spaces. These can also be connected to via Aux, USB, or Jack lead.
- 7x trestle tables.
- 20x white chairs.
- 1x SONY TV (75-inch) on wheels.
- 1x 'floating' projector (Panasonic PT-RQ7 with standard lens).
- 2 x Panasonic PT-VMZ71b with internal zoom lens
- Camera (Panasonic AG-CX350E), greenscreen. **For details see Appendix A.**

Per request, the following may also be available:

- Workshop tools (drills, saws, clamps etc.)
- Tarpaulins
- Additional chairs/tables
- Extension leads
- Cleaning equipment

All windows in Arches 1 and 3 have an externally fitted marketing vinyl that reduces visibility from the street into the spaces. However, it is still possible to see into the spaces, especially at night if they are lit up within.

## SPACE USE POLICIES AND NOTES

### Smoking Policy

Smoking is not permitted in our buildings at any time. Smoking is not allowed between the Arches and main HOME building, nor in the loading bay. The nearest smoking point is in front of the main HOME building.

## **Temperature & Sound Bleed**

Please be aware that the Arches occupy the spaces in brick archways under a well-used railway line. Effort has been made to reduce noise bleed from the street and the trains above, but the railway line is still clearly audible. It is difficult to retain heat in the spaces, and visitors are encouraged to bring functional layers, especially during cold weather.

## **WORKING PRACTICES AND SAFETY IN THE ARCHES**

Duties required under Construction (Design and Management) Regulations 2015(CDM15)

CDM15 came into force on 6 April 2015 and removed the previous exemption for the entertainment sector. CDM15 aims to ensure health and safety issues are appropriately considered during the development of construction projects and the aim of the Regulations is to reduce the risk of harm to those who have to build, use, maintain, and take down structures. Under CDM15 HOME acts as a CDM Contractor to the visiting company and must ensure visiting companies are aware of the CDM Regulations:

*Reg 15 (1): A contractor must not carry out construction work in relation to a project unless satisfied that the client is aware of the duties owed by the client under these Regulations.*

The full HSE guidance document for the CDM15 regulations can be found at:

<http://www.hse.gov.uk/pubns/ priced/1153.pdf>

We may not be the construction industry, but we do undertake acts of construction as defined within CDM15 within the wider activity of staging a production. Activities such as the assembly and dismantling of sets and scenery onstage, rigging and truss activity, the installation of lighting, AV and sound rigs and all similar work including the focus are covered within the scope of CDM15. Visiting companies must ensure they comply with all aspects of CDM15 and we will make every effort to assist the visiting company in fulfilling their duties.

#### Site Rules during get-ins and fit ups




Whilst construction activities are taking place on HOME premises the following site safety rules must be adhered to by all personnel working on site including freelance or visiting company staff and external contractors:

- Suitable protective safety footwear must be worn at all times
- Hard hats must be worn when there is a risk of objects falling from height
- Correct PPE for any activities such as safety goggles, gloves and ear protection must be used
- All near misses, incidents and accidents must be reported
- Safe systems of work must be adhered to
- No unauthorised persons are allowed in the auditorium or workshop areas, access is restricted to personnel engaged in construction activities
- All employees must receive a safety induction
- Only trained operatives are allowed to erect alter or dismantle scaffolding or mobile towers or operate mobile elevated work platforms (Genie GR20)
- Smoking, E-cigarettes and or/vaping is not permitted in the buildings

## **APPENDIX A – CAMERA & GREEN SCREEN**

Equipment list for film/green screen work:

# ARCHES Technical Specifications

<p><b>Camera: AG-CX350E</b> (Panasonic 4k Memory Card Camera-Recorder)</p> <p><b>Full spec:</b> <a href="https://eu.connect.panasonic.com/gb/en/broadcast-proav/professional-camcorders/ag-cx350">https://eu.connect.panasonic.com/gb/en/broadcast-proav/professional-camcorders/ag-cx350</a></p>	
<p><b>2x SD Cards:</b> 128GB Lexar Professional.</p> <p><b>Camera Tripod.</b></p>	
<p><b>Green Screen:</b> (3 x 6m?) Fabric.</p> <p><b>Backdrop Stand:</b> Portable Photography Backdrop Stand by BackdropSource</p> <p>3m x 3m. With Clips.</p>	
<p><b>2x LED Lights:</b> LED Light D1080 by BackdropSource. Colour Temperature – 3200-5600K. Brightness – 4500 Luc @2m. <a href="#">Full specification here.</a></p> <p><b>2x Light Stands:</b> Min height – 0.78m. Max height – 2.3m.</p>	

## APPENDIX B – PC Workstations

Arch 2 houses two PC work stations which can be used by visitors or HOME Staff. Each Workstation has;

- Intel® Core™ i9 24-Core Processor i9-14900K
- 24GB GIGABYTE GEFORCE RTX 4090graphics card
- 32GB Memory
- 1 TB Windows SSD Drive for Operating system and Software
- 4 TB SSD Data Drive
- Bluray player / recorder
- Logitech® HD Webcam C920 webcam
- 1Gb Network connection
- Cherry Cushioned Keyboard
- Logitech Mouse
- Alienware AW3423DWF 34 Inch Ultra Wide Screen Monitor
- **Adobe Creative Suite**, including Photoshop, illustrator, Premier and After Effects
- **Office365**, including Word, PowerPoint and Excel

## APPENDIX C – LOADING & UNLOADING

### Access to Loading Bay

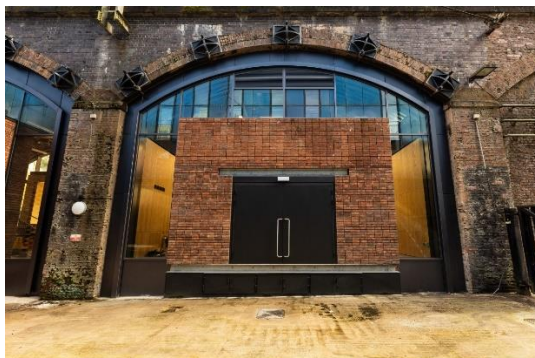
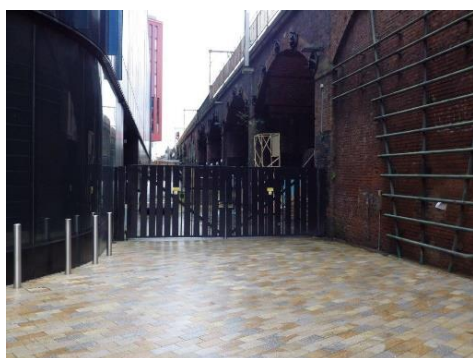
Please do not use the HOME street address for vehicle access as it takes you to the front of our building.

# ARCHES Technical Specifications

Access for unloading is via:

**First Street Railway Arch on Whitworth Street West, M1 5ND**, marked as Jack Rosenthal Street.

You will need to contact us to arrange access via the bollards, access to the dock is usually available to drop off and pick up equipment, but this must be by prior arrangement. We are not able to offer the dock as a parking solution. Please let us know your requirements before you arrive.



Additionally, there is access to Arch 1 via loading doors 1.5m wide x 2.1m high – this entrance has flat, level access from HOME building.