

DRINKS  
MENU  
DRINKS  
MENU  
DRINKS  
DRINKS  
MENU  
DRINKS  
MENU  
DRINKS



HOME  
BAR & KITCHEN

# COCKTAILS £8.5

## MARGARITA

Olmeqa Tequila, Cointreau, lime juice, sugar syrup. Served on the rocks. Salted

## SPICY MANGO MARGARITA

Olmeqa Tequila, Cointreau, spicy mango syrup, lime juice, a pinch of chilli powder, chilli salt rim  
Served on the rocks

## PORNSTAR MARTINI

Absolut Vanilla, passionfruit liqueur, pineapple juice, lime juice, passionfruit purée and prosecco on the side

## FRENCH MARTINI

Absolut Vanilla, Chambord, raspberry purée, pineapple juice, raspberry dust sprinkled on top

## ESPRESSO MARTINI

Absolut Vodka, Kahlua, espresso and sugar syrup

## CLASSIC MOJITO

Havana Club 3 Años, sugar, fresh mint, fresh lime, soda

## RASPBERRY MOJITO

Havana Club 3 Años, Chambord, raspberry purée, sugar, fresh mint, fresh lime, soda

## GODFATHER

Monkey Shoulder Whiskey, Disaronno, maraschino cherry

## NEGRONI

Roku Gin, Lillet Rouge, Campari

## AMARETTO SOUR

Disaronno, lemon juice, sugar syrup, maraschino cherry, angostura bitters

## WHISKY SOUR

Makers Mark, lemon juice, sugar syrup, maraschino cherry, angostura bitters

## PISCO SOUR

Pisco ABA, lemon juice, sugar syrup, angostura bitters

## LONG ISLAND ICED TEA

Absolut Vodka, Beefeater Gin, Havana Club 3 años, Olmeqa Tequila, Cointreau, sugar syrup, lemon juice, cola

## APEROL SPRITZ

Aperol, Prosecco, soda

## LILLET ROSE SPRITZ

Lillet Rose, Prosecco, soda

# MOCKTAILS £6

## VIRGIN FRENCH MARTINI

Raspberry purée, pineapple juice, cranberry juice

## STRAWBERRY CREAM SODA

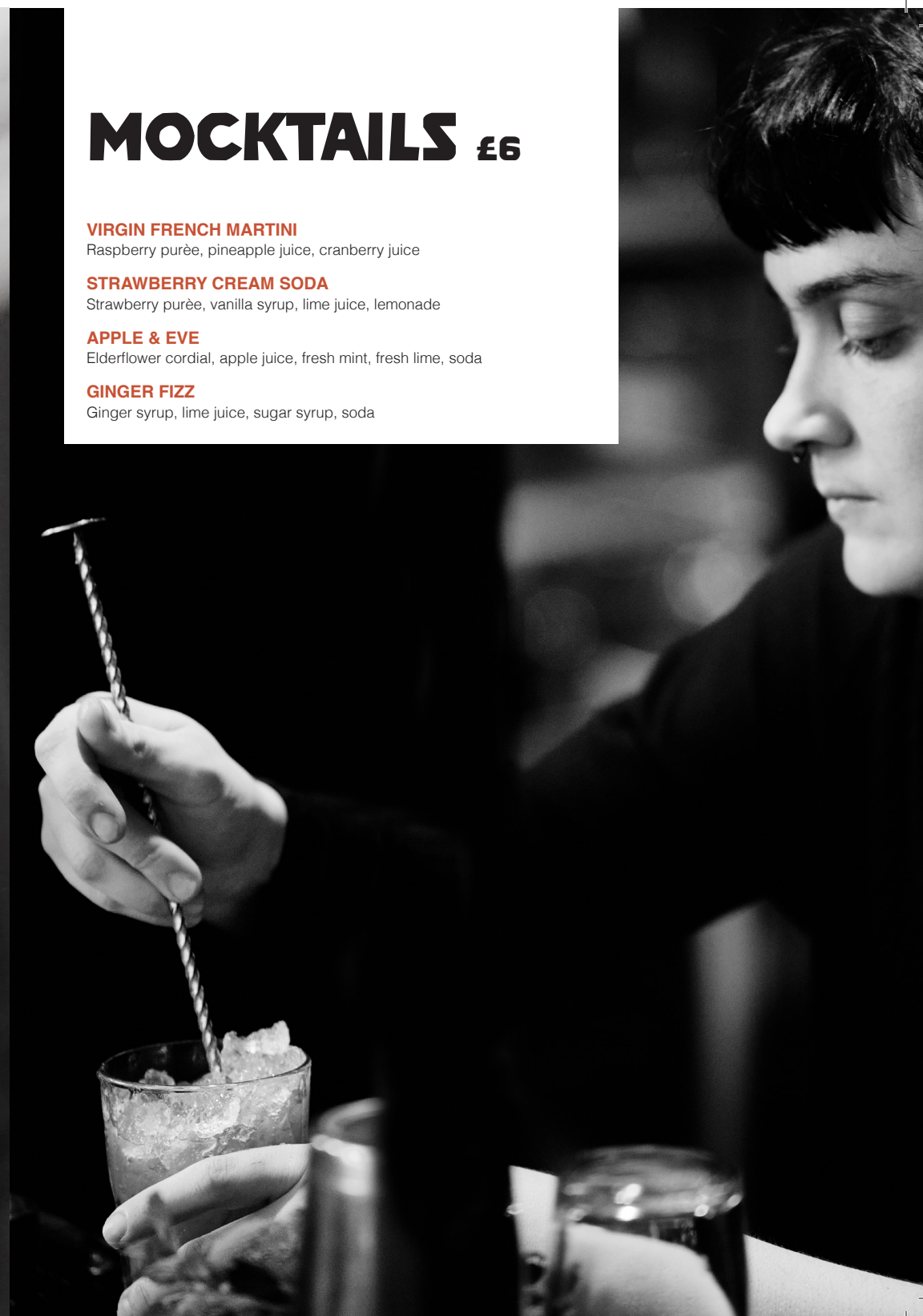
Strawberry purée, vanilla syrup, lime juice, lemonade

## APPLE & EVE

Elderflower cordial, apple juice, fresh mint, fresh lime, soda

## GINGER FIZZ

Ginger syrup, lime juice, sugar syrup, soda





**REEL DEAL**

**PIZZA,  
DRINK  
& CINEMA  
TICKET  
£16.95**

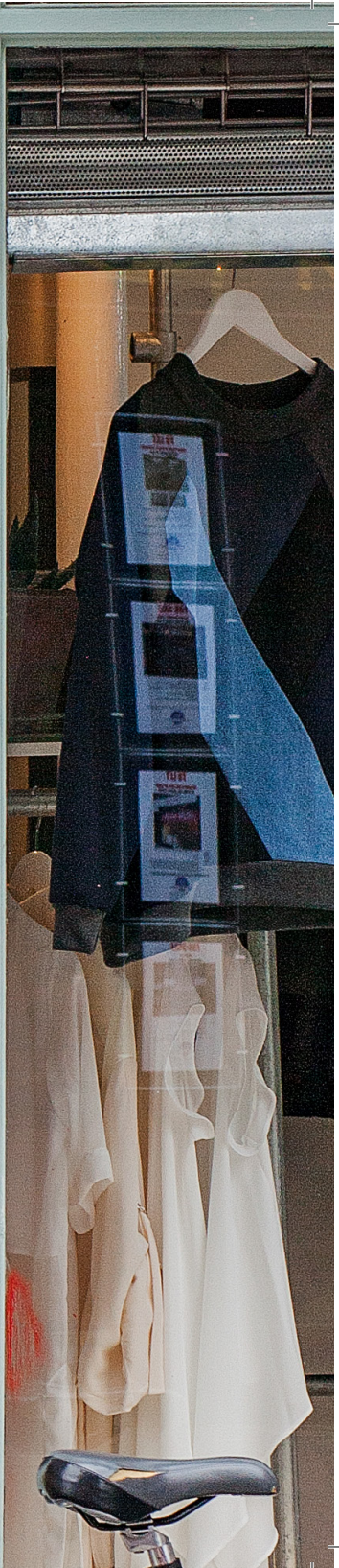
Mondays & Tuesdays (+ booking fee)

**HOME  
BAR & KITCHEN**

27 A

11 KOSOXOS = QANULLA

SWA





# RED

<b>MORADOR TEMPRANILLO</b> Spain, 13% Clean and intense aromas of ripe cherry develop in to a fresh palate of berry fruit with a delicate hint of vanilla.	175ml 6.75	250ml 8.90	BTL 25
<b>LUNA AZUL MERLOT</b> Chile, 13% Aromas of cassis and liquorice, with flavours of plum, sweet spice and a hint of chocolate.	6.75	8.90	25
<b>ILLUSION MALBEC</b> France, 12.5% Fresh and full, with sweet, juicy and ample tannins and a very elegant finish.	7.75	9.90	28
<b>BALAU RI PINOT NOIR</b> Romania, 12.5% Gorgeous flavours, almost syrupy in its concentration. Dark, rich and potent, with layers of complex black cherry, raspberry and cinnamon.	8.75	10.90	30

# ROSÉ

<b>MORADOR ROSADO GRENACHE</b> Spain, 12.5% A bright raspberry pink colour with an intensely fresh nose of ripe strawberry fruit and flowers gives way to a well-balanced and tasty palate, dry and delicious.	175ml 6.25	250ml 8.90	BTL 25
<b>I CASTELLI PINOT GRIGIO</b> Italy, 12% Slightly mineral, soft and persistent with fruity notes and light aromatics. SWA Bronze Award.	7.75	9.90	28

# WHITE

<b>MORADOR VIURA</b> Spain, 12.5% Aromas of ripe apricot, peach and lychee lead into a smooth, fresh, dry and well-balanced palate with delicate fruity notes.	175ml 6.75	250ml 8.90	BTL 25
<b>FIORI SUL MURO PINOT GRIGIO</b> Italy, 12% Easy drinking delightful white wine with soft ripe fruits and an appetising dry finish.	6.75	8.90	25
<b>BOULDERS BEACH SAUVIGNON BLANC</b> South Africa, 13.5% Refreshingly crisp with aromas and flavours of green fig and citrus, with a hit of lemon-grass.	7.75	9.90	28
<b>VIA ALTA CHARDONNAY</b> Chile, 13% A fresh, tropical fruit flavoured Chardonnay. This wine displays lots of refreshing citrus acidity to give a great lift on the palate.	8.75	10.90	30

# SPARKLING

<b>FAMIGLIA BOTTER PROSECCO</b> Italy, 11% Apple, floral, honey	125ml 6.75	BTL 38
---	---------------	-----------

*We also serve 125ml wine measurements, just ask your server!*



2

Cinemas  
Event Space  
Cinema Bar

# BEERS

## DRAUGHT

	ABV	1/2	PINT
HOME LAGER (GF/VE)	4%	2.8	5.6
DORTMUNDER VIER LAGER	4%	2.9	5.8
SHINDIGGER EASY PALE	3.4%	3	5.9
MANCHESTER UNION LAGER	4.8%	3.1	6.2
BRIGHTSIDE MAVERICK IPA (GF/VE)	4.8%	3	6
JUBEL PEACH LAGER (GF/VE)	4%	3.1	6.2
HOME CIDER (VE)	4.5%	2.9	5.8
CAMDEN STOUT	4%	3.1	6.2
LUCKY SAINT LAGER	0.5%	2.7	5.4

## CASK

HOME ALE (GF/VE)	3.8%	2.75	5.5
SESSION (GF/VE)	4.2%	2.75	5.5
TIMOTHY TAYLORS LANDLORD	4.3%	2.9	5.8
GUEST ALES EVER CHANGING - ASK YOUR SERVER!			

## BOTTLES AND CANS

### BEER

		330ML
CORONA	4.5%	5.2
PERONI	5%	5.2
SEVEN BROS JUICY IPA	6%	6.2
GUEST CRAFT CAN/BOTTLE - ASK YOUR SERVER!		

### CIDER

		330ML
REKORDERLIG STRAWBERRY & LIME	4%	5.2
REKORDERLIG WILD BERRIES	4%	5.2

### NO/LOW ALCOHOL

		330ML
FREE DAMM LAGER	0.0%	4.5
		500ML
SCHÖFFERHOFER GRAPEFRUIT	2.5%	5.5

HOME  
2<sup>nd</sup> Floor for the  
wedding of  
*David*  
&  
*Jessie*

# FUNCTIONS & EVENTS

ENQUIRE TODAY  
functionsandevents@eatdrinkhome.co.uk





# SPIRITS

## VODKA

	25ML	50ML
--	------	------

ABSOLUT VODKA	4.8	8.7
ABSOLUT VANILLA	4.8	8.7
ABSOLUT WATERMELON	5.6	10.2

## GIN

BEEFEATER	4.9	8.7
BEEFEATER PINK STRAWBERRY	4.9	8.7
BEEFEATER BLACKBERRY	4.9	8.7
HENDRICKS	5.6	10.2
MCR GIN	6.6	12.2
ROKU	6.6	12.2

## RUM

HAVANA 3 AÑOS	4.9	8.7
MOUNT GAY	4.9	8.7
OLD J SPICED	4.9	8.7
LANGS MANGO & GINGER SPICED	5.6	10.2
WRAY & NEPHEW	5.6	10.2
CHAIRMANS RESERVE	6.6	12.2

## WHISKEY

JACK DANIELS	4.9	8.7
JAMESON	4.9	8.7
MAKERS MARK	4.9	8.7
MONKEY SHOULDER	5.6	10.2
WILD TURKEY RYE	6.6	12.2
GLENFIDDICH 12	6.6	12.2

## TEQUILA

OLMECA	4.9	8.7
CAZCABEL COFFEE	4.9	8.7

## BRANDY

MARTELL VS	4.9	8.7
HENNESSY	6.6	12.2

## NON-ALCOHOLIC

TANQUERAY 0%	5.6	
--------------	-----	--

# MIXERS

## SODA

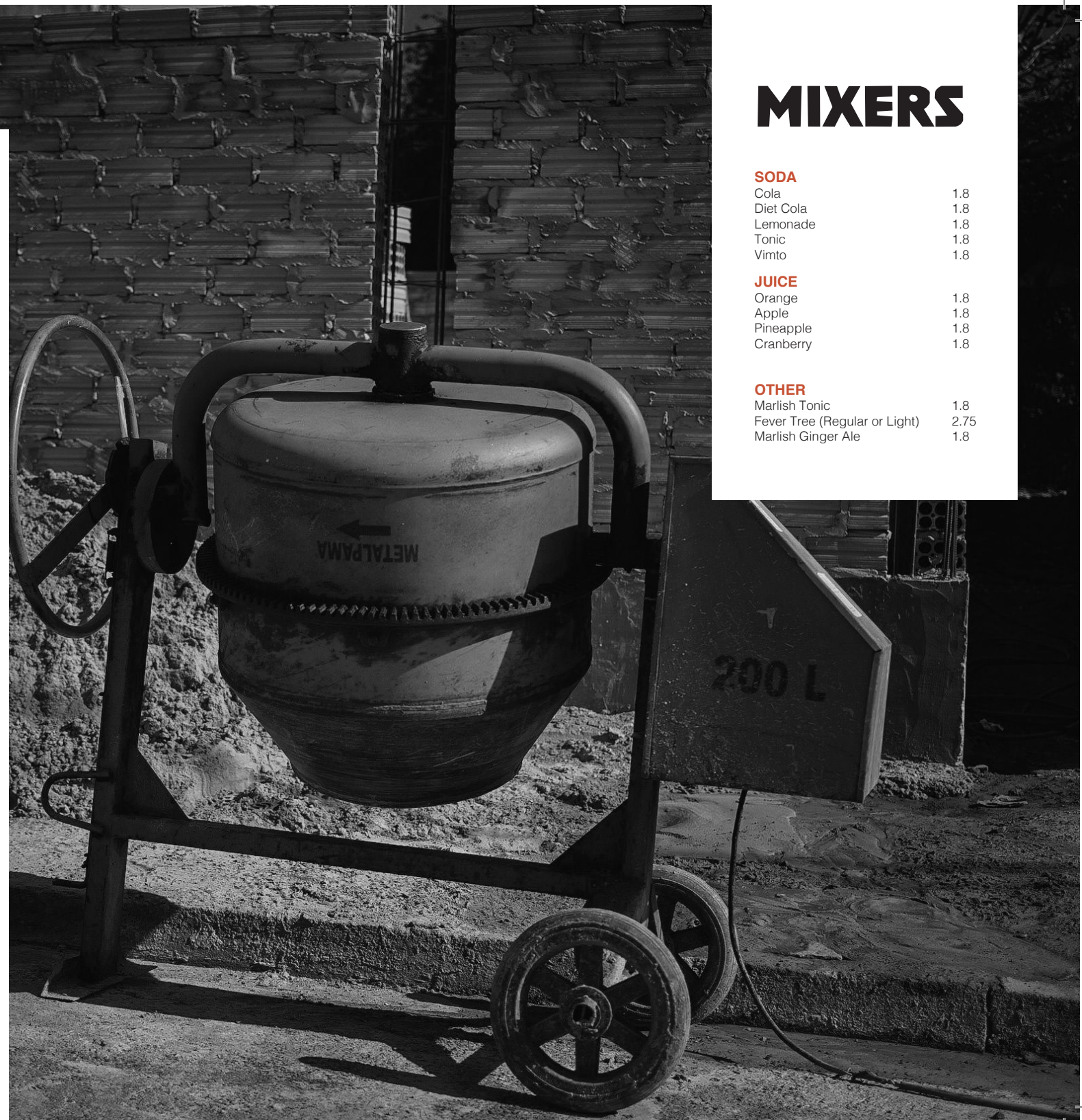
Cola	1.8
Diet Cola	1.8
Lemonade	1.8
Tonic	1.8
Vimto	1.8

## JUICE

Orange	1.8
Apple	1.8
Pineapple	1.8
Cranberry	1.8

## OTHER

Marlish Tonic	1.8
Fever Tree (Regular or Light)	2.75
Marlish Ginger Ale	1.8





# SOFT DRINKS

<b>SODAS</b>	<b>1/2</b>	<b>PINT</b>
Cola	2.7	3.5
Diet Cola	2.7	3.5
Lemonade	2.7	3.5
Tonic	2.7	3.5
Vimto	2.7	3.5

<b>JUICE</b>		
Apple	2.75	3.6
Orange	2.75	3.6
Pineapple	2.75	3.6
Cranberry	2.75	3.6

	<b>BOTTLE</b>	
Coke	3.8	
Diet Coke	3.8	

<b>FENTIMANS</b>	<b>BOTTLE</b>	
Dandelion & Burdock	3.75	
Ginger Beer	3.75	
Rose Lemonade	3.75	
Sparkling Elderflower	3.75	

<b>SAN PELLEGRINO</b>	<b>CAN</b>	
Limonata	3.5	
Aranciata	3.5	
Melograno & Arancia	3.5	

# SOFT DRINKS

<b>MARLISH</b>		
Still Spring Water	2.5	
Sparkling Spring Water	2.5	
Tonic	1.8	
Ginger Ale	1.8	

## **LAID BEAR KOMBUCHA**



Fermented tea, packed with good-for-your-gut healthy bacteria. Mancunian born and bred award winning booch. Small batch brewed with 100% organic ingredients for a high quality and genuine finish.

<b>LAID BEAR GINGER</b> (ve)	6.5
Kombucha, layered with a fiery ginger hit	

<b>LAID BEAR LIME &amp; MINT</b> (ve)	6.5
Zingy & super refreshing, topped off with cold-pressed fresh mint and juicy limes	





# HOT DRINKS

All of our coffees are served with a double shot as standard.  
Please tell us if you would prefer a single shot

## COFFEE

Decaf available

Latte	4.1
Cappuccino	4
Americano	3.4
Flat white	4.1
Double Espresso	2.9
Macchiato	2.9
Cortado	3
Chai latte	4.1
Iced latte	4.1
Classic Hot chocolate	4.2

## ALTERNATIVE MILK

Oat	No extra charge
Almond	No extra charge

## SYRUPS

Vanilla	75p
Caramel	75p
Honeycomb	75p
Gingerbread	75p
Hazelnut	75p
Chai	75p

## TEA

English breakfast	3.1
Decaf	3.1
Earl grey	3.5
Lemon & ginger	3.5
Apple & blackberry	3.5
Moroccan mint	3.5
Green tea	3.5
Chai tea	3.5





**HOME**  
BAR & KITCHEN